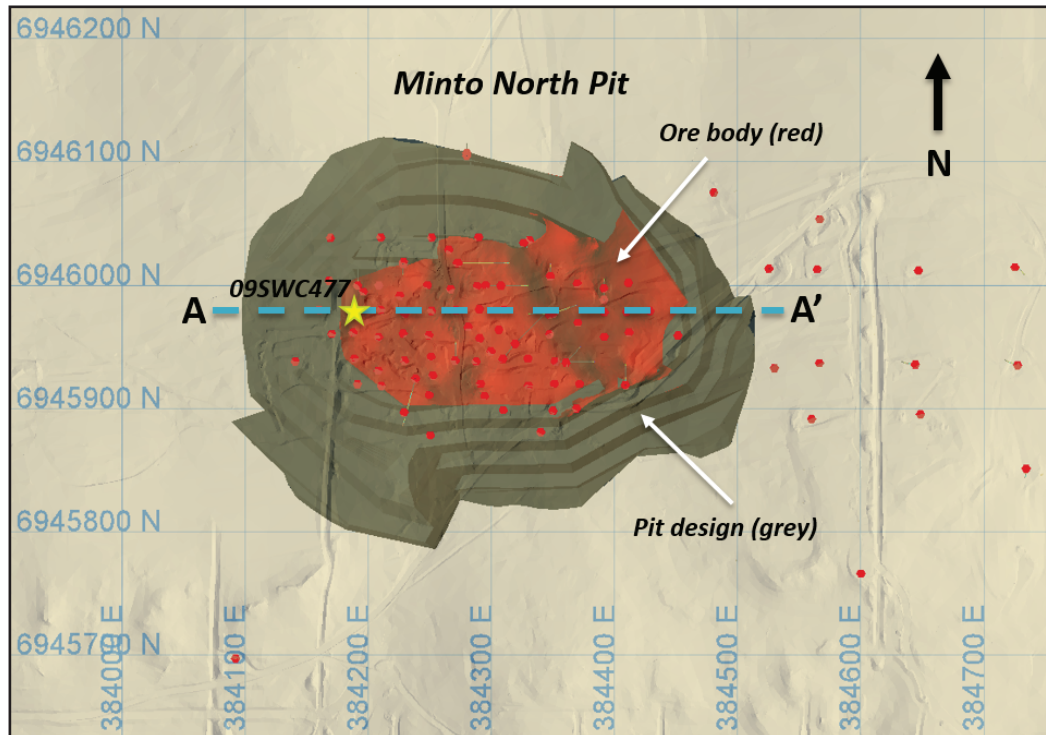
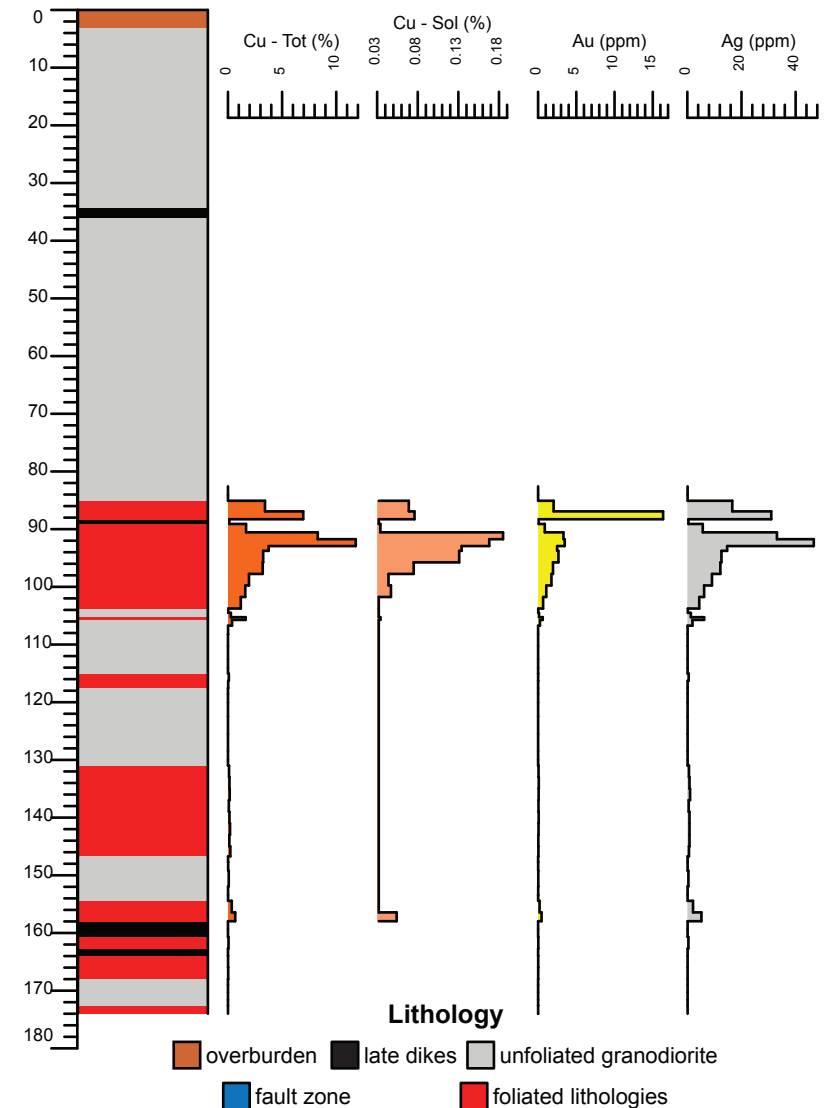


Minto deposit (Yukon MINFILE 115I 021, 022) **Drill Hole: 09SWC477, Minto North deposit**

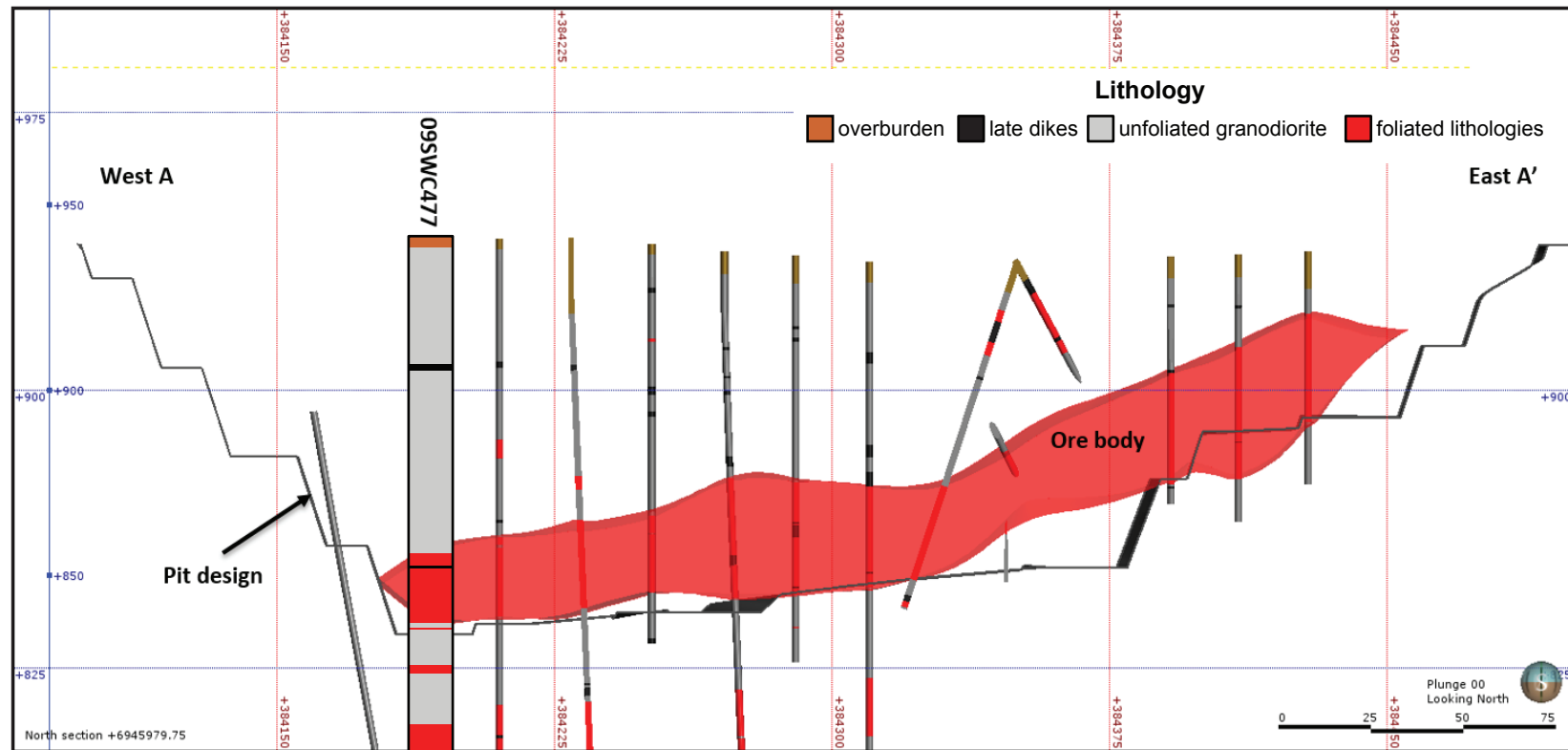
Area	Hole No.	Azimuth	Dip	Length (m)	Collar coordinates (NAD83, Zn 8)
Minto North	09SWC477	0	-90	174.0	384191mE, 6945979mN



Plan view image of Minto North deposit area. Collar location of 09SWC477 shown by yellow star, red circles show collar locations of other drill holes.



Simplified strip log of 09SWC477 with selected assays.



Above: Simplified vertical east-west cross-section through the Minto North pit.

Right: Selected assays through Minto North orebody. Cu - Tot = sulphide and non-sulphide copper, Cu-Sol = non-sulphide copper

Hole	Sample	From (m)	To (m)	Interval (m)	Cu (%)	Cu-Sol (%)	Au (ppm)	Ag (ppm)
09SWC477	G0757715	82.58	84.08	1.5	0.001		0.003	0.1
09SWC477	G0757716	84.08	85.08	1	0.001		0.003	0.1
09SWC477	G0757718	85.08	86.92	1.84	3.42	0.069	2.03	16.6
09SWC477	G0757719	86.92	88.28	1.36	6.95	0.076	16.35	31
09SWC477	G0757720	88.28	89.1	0.82	0.13		0.078	0.4
09SWC477	G0757721	89.1	90.55	1.45	1.67	0.034	0.874	5.7
09SWC477	G0757723	90.55	91.74	1.19	8.29	0.185	3.32	33.1
09SWC477	G0757724	91.74	92.93	1.19	11.8	0.168	3.48	46.7
09SWC477	G0757725	92.93	93.76	0.83	3.76	0.134	2.49	14.7
09SWC477	G0757726	93.76	95.76	2	3.25	0.131	2.66	12.6
09SWC477	G0757728	95.76	97.76	2	3.21	0.075	1.95	12.2
09SWC477	G0757729	97.76	99.76	2	1.94	0.044	1.745	9.1
09SWC477	G0757730	99.76	101.76	2	1.6	0.047	1.07	6.2
09SWC477	G0757731	101.76	103.76	2	1.185	0.032	0.654	4.4
09SWC477	G0757733	103.76	104.51	0.75	0.03		0.02	0.2
09SWC477	G0757734	104.51	105.26	0.75	0.27		0.118	1.3
09SWC477	G0757735	105.26	105.73	0.47	1.625	0.034	0.606	6.2